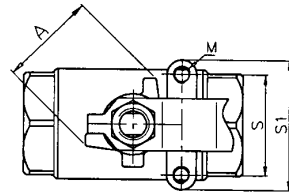
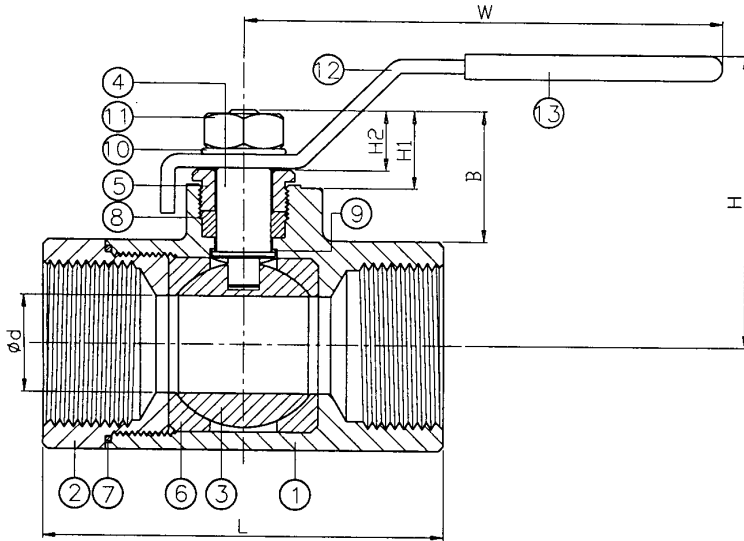




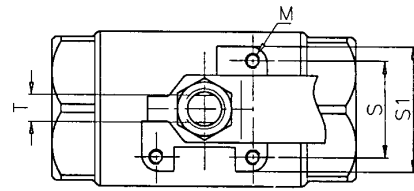
VALVES

STAINLESS STEEL TWO PIECE BALL VALVE

1/4" - 1" 2000 PSI W.O.G.
 1-1/4" - 2" 2000 PSI W.O.G.
**Blow-Out PROOF STEM
 LOCKING DEVICE**

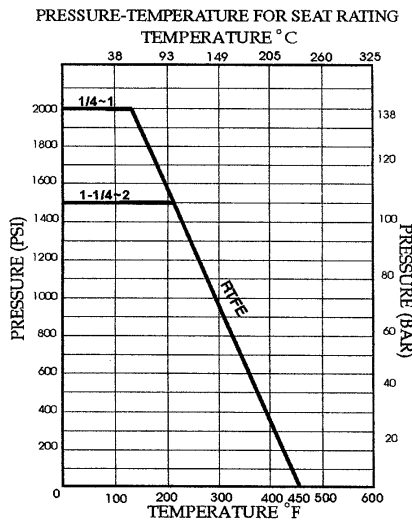


1/4" - 1"



1-1/4" - 2"

FIGURE NUMBER 1020



ITEM	PART NAME	MATERIAL
1	Body	ASTM A351 CF8M
2	Cap	ASTM A351 CF8M
3	Ball	ASTM A351 CF8M
4	Stem	ASTM A276-316
5	Gland Nut	AISI 304
6	Ball Seat	RTFE
7	Body Seal	PTFE
8	Packing	PTFE
9	Thrust Washer	PTFE
10	Stem Washer	AISI 304
11	Nut	AISI 304
12	Handle	AISI 304
13	Handle Sleeve	PVC

Size	d	L	W	H	H1	H2	A	B	S	S1	M	T	Torque* In - Lb.	CV Factor Approx.	Wt. (Lbs.) Approx.
3/8"	0.50	2.24	3.94	2.01	0.54	0.43	1.10	0.98	1.11	1.57	3/16" - 24 UNC	0.22	35	9.8	0.70
1/2"	0.50	2.36	3.94	2.01	0.61	0.43	1.10	0.98	1.11	1.57	3/16" - 24 UNC	0.22	38	9.8	0.68
3/4"	0.69	3.11	4.84	2.44	0.75	0.55	1.34	1.18	1.37	1.77	3/16" - 24 UNC	0.25	65	25	1.36
1"	0.88	3.35	4.84	2.64	0.75	0.55	1.34	1.18	1.37	1.77	3/16" - 24 UNC	0.25	110	35	1.69
1-1/4"	1.00	4.02	5.67	3.31	1.13	0.75	-	-	1.40	2.01	1/4" - 20 UNC	0.37	220	47	2.75
1-1/2"	1.25	4.37	5.67	3.50	1.13	0.75	-	-	1.40	2.01	1/4" - 20 UNC	0.37	215	81	4.07
2"	1.50	5.39	7.09	3.70	1.05	0.75	-	-	1.40	2.01	1/4" - 20 UNC	0.37	240	105	5.96

*Estimated torque factors are at full differential pressure and clean service. Certain applications can alter the valve torque significantly. Please take into consideration your service conditions, differential pressure, frequency of operation, temperature, etc. when sizing actuators for our valves.