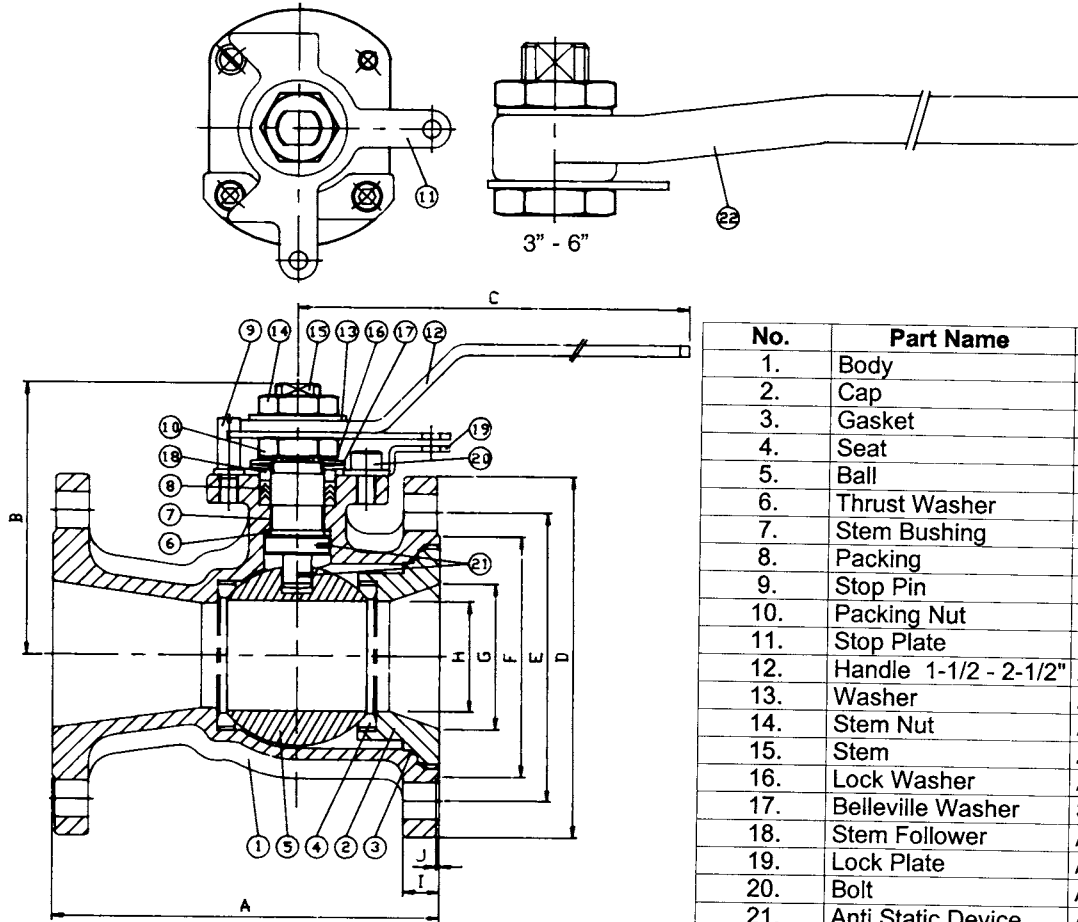




# VALVES

## STAINLESS STEEL CAST BALL VALVES

### 1-1/2" - 6" CLASS 150 REDUCED PORT



| No. | Part Name             | Material            |
|-----|-----------------------|---------------------|
| 1.  | Body                  | ASTM A351 Gr. CF8M  |
| 2.  | Cap                   | ASTM A351 Gr. CF8M  |
| 3.  | Gasket                | RTFE                |
| 4.  | Seat                  | RTFE                |
| 5.  | Ball                  | ASTM A351 Gr. CF8M  |
| 6.  | Thrust Washer         | RTFE                |
| 7.  | Stem Bushing          | RTFE                |
| 8.  | Packing               | PTFE                |
| 9.  | Stop Pin              | ASTM 276 Gr. 304    |
| 10. | Packing Nut           | ASTM A194 Gr. 8     |
| 11. | Stop Plate            | ASTM A276 Gr. 304   |
| 12. | Handle 1-1/2 - 2-1/2" | ASTM A276 Gr. 304   |
| 13. | Washer                | ASTM A276 Gr. 304   |
| 14. | Stem Nut              | ASTM A194 Gr. 8     |
| 15. | Stem                  | ASTM A276 Gr. 316   |
| 16. | Lock Washer           | ASTM A276 Gr. 304   |
| 17. | Belleville Washer     | Stainless Steel     |
| 18. | Stem Follower         | ASTM A276 Gr. 316   |
| 19. | Lock Plate            | ASTM A276 Gr. 304   |
| 20. | Bolt                  | ASTM A193 Gr. B8    |
| 21. | Anti Static Device    | ASTM A276 Gr. 304   |
| 22. | Handle 3" - 6"        | ASTM A536 Gr. FCD45 |

FIGURE NUMBER 5156

#### Features

- Blow Out Proof Stem
- Anti Static Device
- Locking Device
- ISO 5211 Actuator Mounting Pad

#### Applicable Standards

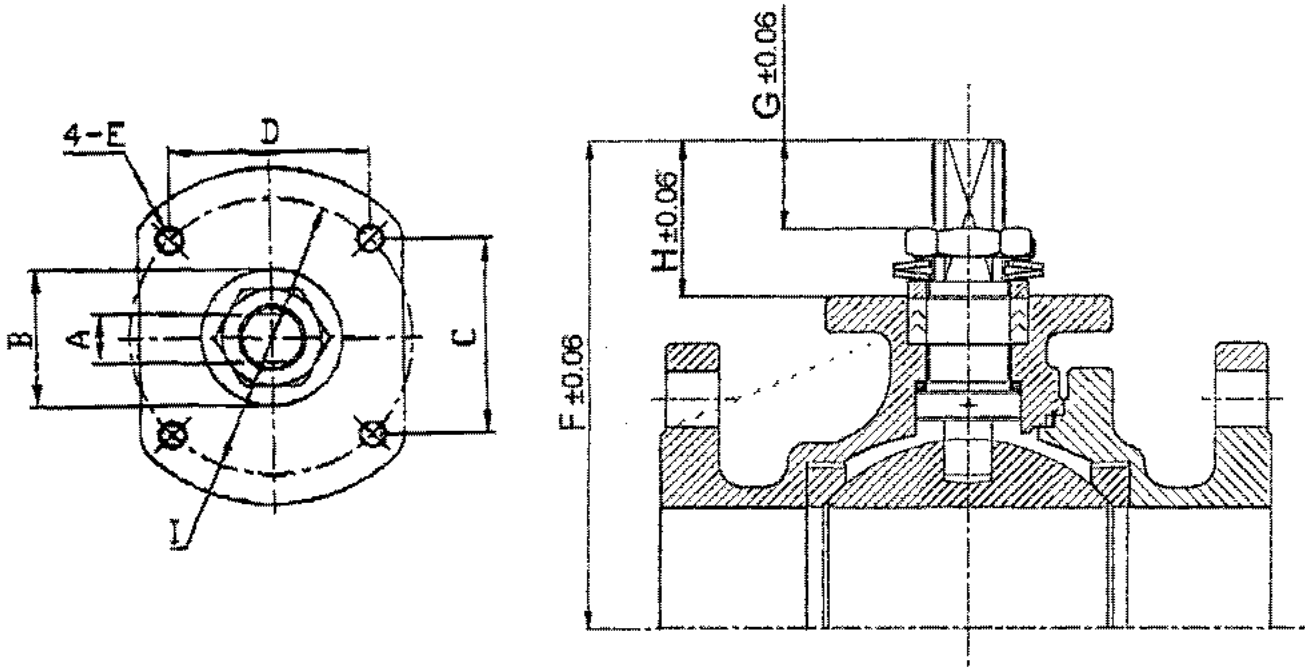
- Shell wall thickness ANSI B16.34
- Face-to-Face Dimensions ANSI B16.10
- End Flange Dimensions ANSI B16.5
- Pressure Temperature Rating (valve shell) ANSI B16.34
- Pressure Test API 598

| Valve Size | A     | B    | C     | D     | E    | F    | G    | H    | I    | J    | Cv Values Approx. | Torque Values * (In. - Lbs.) | Number of Holes & Diameter | Weight (Lbs.) Approx. |
|------------|-------|------|-------|-------|------|------|------|------|------|------|-------------------|------------------------------|----------------------------|-----------------------|
| 1-1/2"     | 6.50  | 3.31 | 5.60  | 5.00  | 3.88 | 2.88 | 1.50 | 1.25 | 0.56 | 1/16 | 125               | 180                          | 4-5/8"                     | 11                    |
| 2"         | 7.00  | 4.35 | 7.90  | 6.00  | 4.75 | 3.62 | 2.00 | 1.50 | 0.62 | 1/16 | 165               | 200                          | 4-3/4"                     | 16                    |
| 2-1/2"     | 7.50  | 4.61 | 7.90  | 7.00  | 5.50 | 4.12 | 2.50 | 2.00 | 0.69 | 1/16 | 240               | 325                          | 4-3/4"                     | 24                    |
| 3"         | 8.00  | 6.30 | 13.80 | 7.50  | 6.00 | 5.00 | 3.00 | 2.50 | 0.75 | 1/16 | 290               | 550                          | 4-3/4"                     | 31                    |
| 4"         | 9.00  | 7.25 | 13.80 | 9.00  | 7.50 | 6.19 | 4.00 | 3.25 | 0.94 | 1/16 | 690               | 800                          | 8-3/4"                     | 52                    |
| 6"         | 10.50 | 9.85 | 30.00 | 11.00 | 9.50 | 8.50 | 6.00 | 4.50 | 1.00 | 1/16 | 900               | 1500                         | 8-7/8"                     | 100                   |

\*Estimated torque factors are at full differential pressure and clean service. Certain applications can alter the valve torque significantly. Please take into consideration your service conditions, differential pressure, frequency of operation, temperature, etc. when sizing actuators for our valves.

# Warren® VALVES

## MOUNTING PAD DIMENSIONS CLASS 150



### REDUCED PORT 150

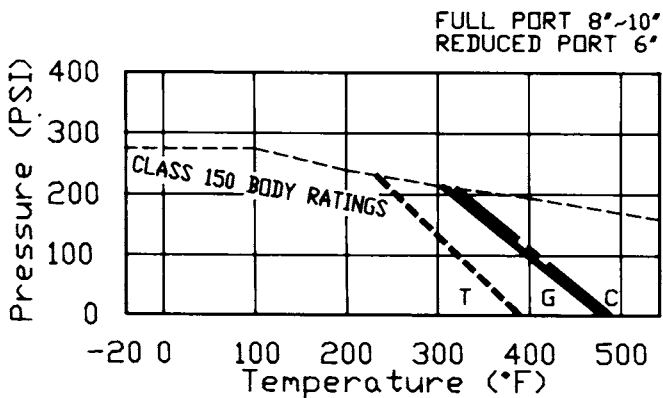
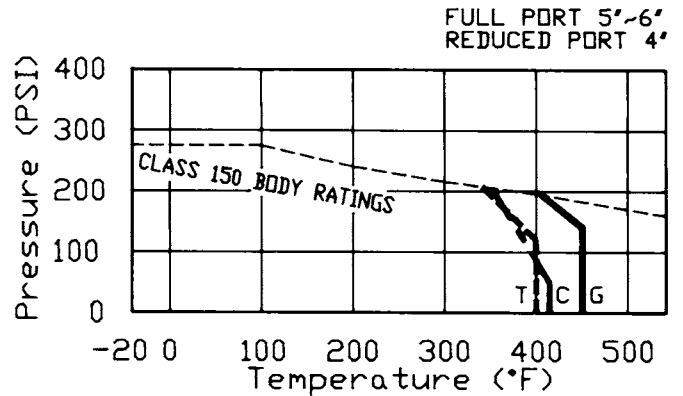
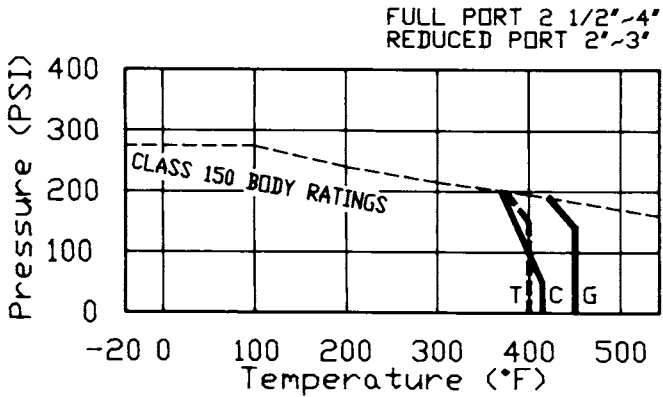
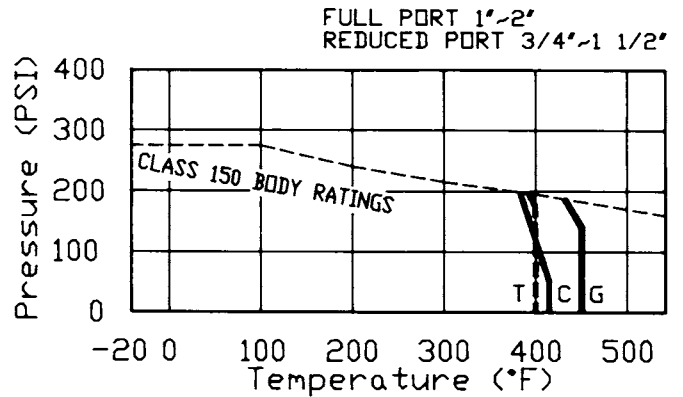
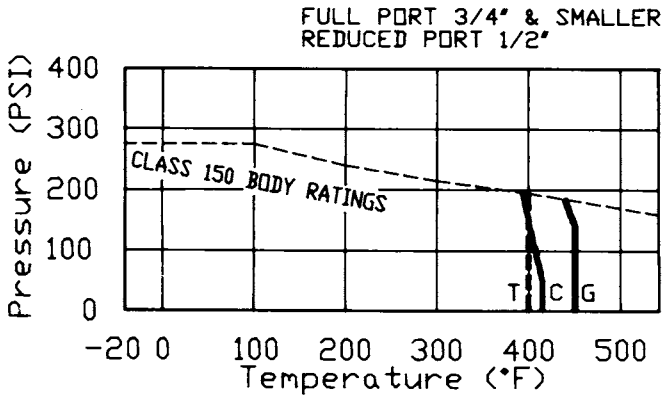
| Size   | A     | B     | C & D | E             | F     | G     | H     | I     | ISO 5211 |
|--------|-------|-------|-------|---------------|-------|-------|-------|-------|----------|
| 1-1/2" | 0.475 | 1.260 | 1.394 | 1/4" - 20UNC  | 3.287 | 0.551 | 1.043 | 1.969 | F07      |
| 2"     | 0.512 | 1.260 | 1.949 | 5/16" - 18UNC | 4.350 | 0.807 | 1.595 | 2.756 | F07      |
| 2-1/2" | 0.512 | 1.260 | 1.949 | 5/16" - 18UNC | 4.646 | 0.807 | 1.595 | 2.756 | F07      |
| 3"     | 0.713 | 1.969 | 2.840 | 3/8" - 16UNC  | 6.319 | 1.693 | 2.658 | 4.016 | F10      |
| 4"     | 0.713 | 1.969 | 2.840 | 3/8" - 16UNC  | 7.205 | 1.575 | 2.480 | 4.016 | F10      |
| 6"     | 1.124 | 2.756 | 3.480 | 1/2" - 13UNC  | 9.843 | 2.658 | 3.661 | 4.921 | F12      |



# VALVES

## PRESSURE TEMPERATURE RATINGS

### CLASS 150



#### SEAT MATERIALS:

- T Virgin PTFE
- G Glass Filled PTFE
- C Carbon Filled PTFE

Body ratings are  
for ASTM A351 Gr. CF8M