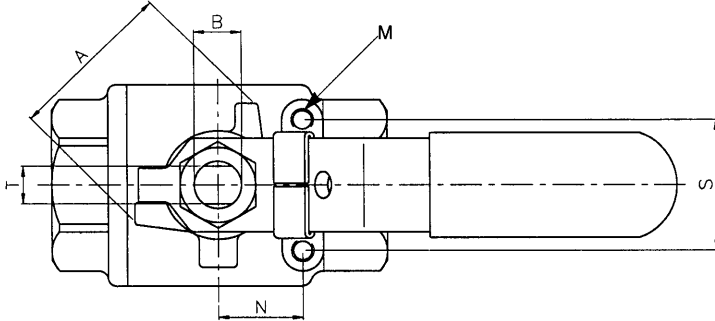




# VALVES

## 2PC BALL VALVE FULL PORT

1/4" - 4" 1000 PSI W.O.G  
LOCKING DEVICE



ITEM	PART NAME	MATERIAL
1	Body	ASTM A351 CF8M
2	Cap	ASTM A351 CF8M
3	Ball	ASTM A351 CF8M
4	Stem	ASTM A276-316
5	Gland Ring	AISI 304
6	Ball Seat	RTFE
7	Body Seal	PTFE
8	Packing	PTFE
9	Thrust Washer	AISI 304
10	Stem Washer	AISI 304
11	Nut	AISI 304
12	Handle	AISI 304
13	Handle Sleeve	PVC
14	Lock Device	AISI 304

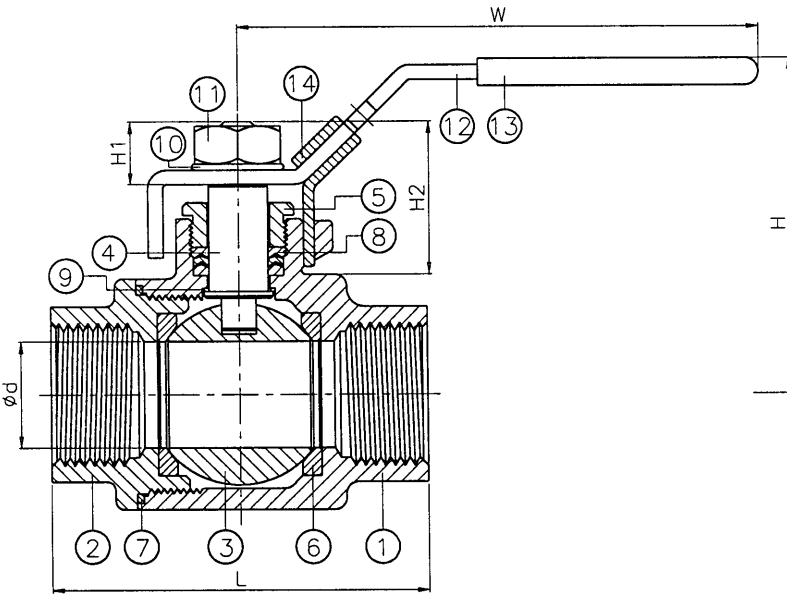
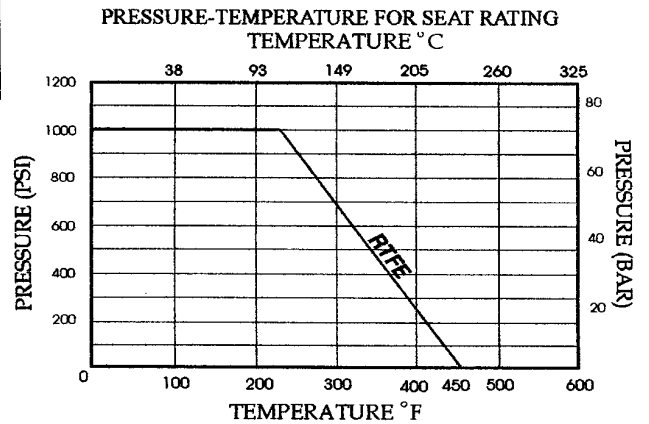


FIGURE NUMBER 1022



Size	d	L	W	H	H1	H2	A	B	T	N	S	M	Torque* Inch / Lbs.	CV Factor Approx.	Wt. (Lbs.) Approx.
3/4"	0.79	3.03	4.92	2.36	0.53	1.20	1.22	3/8"	0.26	0.83	1.37	1/4" - 20 UNC	65	51	1.16
1"	0.98	3.54	6.30	2.91	0.61	1.49	1.48	7/16"	0.31	0.91	1.37	1/4" - 20 UNC	80	68	1.98
1-1/4"	1.26	3.94	6.30	3.15	0.61	1.49	1.48	7/16"	0.31	0.91	1.37	1/4" - 20 UNC	140	120	2.68
1-1/2"	1.50	4.65	7.48	3.62	0.67	1.71	1.74	1/2"	0.35	0.91	1.46	1/4" - 20 UNC	180	170	4.19
2"	1.97	5.43	7.48	3.98	0.67	1.58	1.83	1/2"	0.35	1.35	1.50	1/4" - 20 UNC	215	376	7.05
2-1/2"	2.56	6.57	9.65	5.12	1.18	2.17	2.40	3/4"	0.47	1.42	2.13	1/4" - 20 UNC	700	510	14.90
3"	3.15	7.60	9.65	5.59	1.18	2.17	2.40	3/4"	0.47	1.42	2.24	5/16" - 18 UNC	815	996	26.40
4"	3.94	10.24	12.80	6.85	1.52	2.97	2.90	1"	0.63	1.95	2.44	5/16" - 18 UNC	950	1893	50.70

\*Estimated torque factors are at full differential pressure and clean service. Certain applications can alter the valve torque significantly. Please take into consideration your service conditions, differential pressure, frequency of operation, temperature, etc. when sizing actuators for our valves.